



**Utilizzo**  
**Use**  
**Utilización**

**Herbicides**

Suitable for

**Fungicides**

Suitable for

**Insecticides**

Suitable for

**Dimensioni (mm)**  
**Size (mm)**  
**Dimensiones (mm)**

- Ugello a cono vuoto con inserto in ceramica e corpo in Delrin®.
- Il getto creato da HCA80 garantisce una copertura ottimale pur riducendo il rischio di deriva del prodotto.
- Adatto per l'utilizzo su atomizzatore.
- Il corpo esterno stampato in Delrin®, unito all'inserto in ceramica conferisce eccezionali caratteristiche di durata.
- Adatto per trattamenti con erbicidi, fungicidi ed insetticidi.

- Hollowcone nozzle with ceramic insert and Delrin® body.
- HCA80 spray ensures excellent spraying range, yet reducing the product drift.
- Suitable for orchard sprayer.
- Their Delrin®-molded outer body, together with their ceramic insert, ensures an exceptionally long useful life.
- Suitable for herbicides, fungicides and pesticides.

- Boquilla de cono vacío con inserto de cerámica y cuerpo en Delrin®.
- El chorro creado por HCA80 garantiza una cobertura óptima reduciendo el riesgo de deriva del producto.
- Adecuado para el uso en atomizador.
- El cuerpo exterior moldeado en Delrin®, junto al inserto de cerámica, le otorga excepcionales características de durabilidad.
- Adecuado para tratamientos con herbicidas, fungicidas e insecticidas.

**80°**

Spraying angle

**Ceramic**

Material

**402905xx**

Cap

**5-10 Nm**

Tightening torque for nuts

**Orchard**

Treatment

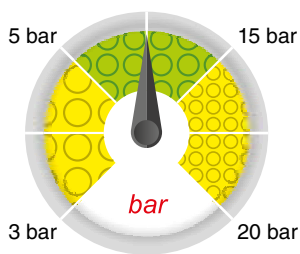
**ISO 10625**

Colour coding

**10 pcs.**

cod. B1

Blister pack

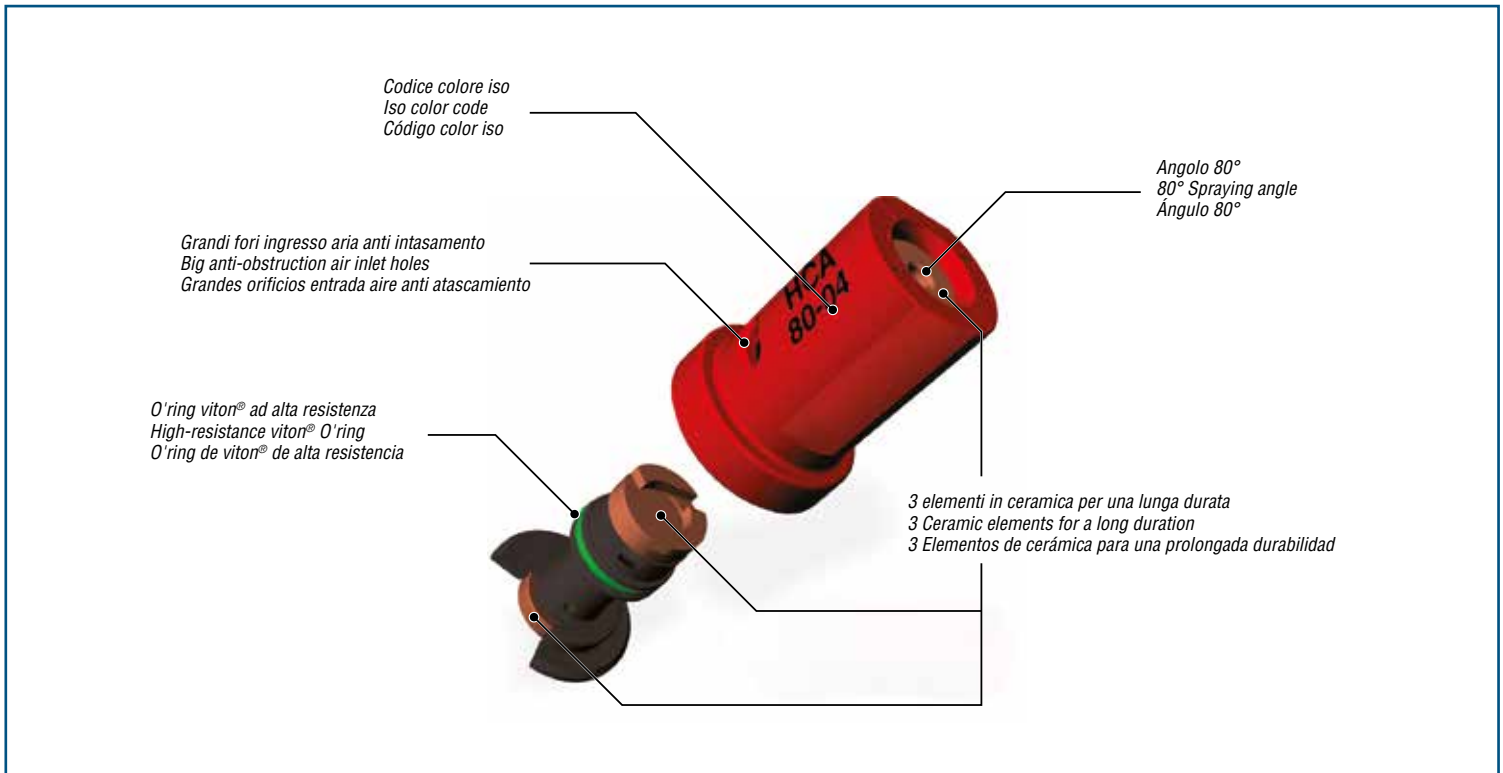


Copertura  
Spray coverage  
Cobertura

Distribuzione  
Nozzle distribution pattern  
Distribución

Dimensione delle gocce su bersaglio  
Drop size pattern on target  
Dimensiones de las gotas en el blanco

| COD.     | q (l/min) |       |       |       |       |       |       |        |        |        |        |        |        |        |        |        |        |        |
|----------|-----------|-------|-------|-------|-------|-------|-------|--------|--------|--------|--------|--------|--------|--------|--------|--------|--------|--------|
|          | 3 bar     | 4 bar | 5 bar | 6 bar | 7 bar | 8 bar | 9 bar | 10 bar | 11 bar | 12 bar | 13 bar | 14 bar | 15 bar | 16 bar | 17 bar | 18 bar | 19 bar | 20 bar |
| HCA8001  | 0.40      | 0.46  | 0.52  | 0.57  | 0.61  | 0.65  | 0.69  | 0.73   | 0.77   | 0.80   | 0.83   | 0.86   | 0.89   | 0.92   | 0.95   | 0.98   | 1.01   | 1.03   |
| HCA80015 | 0.60      | 0.69  | 0.77  | 0.85  | 0.92  | 0.98  | 1.04  | 1.10   | 1.15   | 1.20   | 1.25   | 1.30   | 1.34   | 1.39   | 1.43   | 1.47   | 1.51   | 1.55   |
| HCA8002  | 0.80      | 0.92  | 1.03  | 1.13  | 1.22  | 1.31  | 1.39  | 1.46   | 1.53   | 1.60   | 1.67   | 1.73   | 1.79   | 1.85   | 1.90   | 1.96   | 2.01   | 2.07   |
| HCA80025 | 1.00      | 1.15  | 1.29  | 1.41  | 1.53  | 1.63  | 1.73  | 1.83   | 1.91   | 2.00   | 2.08   | 2.16   | 2.24   | 2.31   | 2.38   | 2.45   | 2.52   | 2.58   |
| HCA8003  | 1.20      | 1.39  | 1.55  | 1.70  | 1.83  | 1.96  | 2.08  | 2.19   | 2.30   | 2.40   | 2.50   | 2.59   | 2.68   | 2.77   | 2.86   | 2.94   | 3.02   | 3.10   |
| HCA80035 | 1.40      | 1.62  | 1.81  | 1.98  | 2.14  | 2.29  | 2.42  | 2.56   | 2.68   | 2.80   | 2.91   | 3.02   | 3.13   | 3.23   | 3.33   | 3.43   | 3.52   | 3.61   |
| HCA8004  | 1.60      | 1.85  | 2.07  | 2.26  | 2.44  | 2.61  | 2.77  | 2.92   | 3.06   | 3.20   | 3.33   | 3.46   | 3.58   | 3.70   | 3.81   | 3.92   | 4.03   | 4.13   |
| HCA8005  | 2.00      | 2.31  | 2.58  | 2.83  | 3.06  | 3.27  | 3.46  | 3.65   | 3.83   | 4.00   | 4.16   | 4.32   | 4.47   | 4.62   | 4.73   | 4.90   | 5.03   | 5.16   |



$$\text{Vol (l/ha)} = \frac{\text{l/min} \times n \times 600}{\text{km/h} \times D \text{ (m)}}$$

