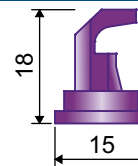




Utilizzo
Use
Utilización



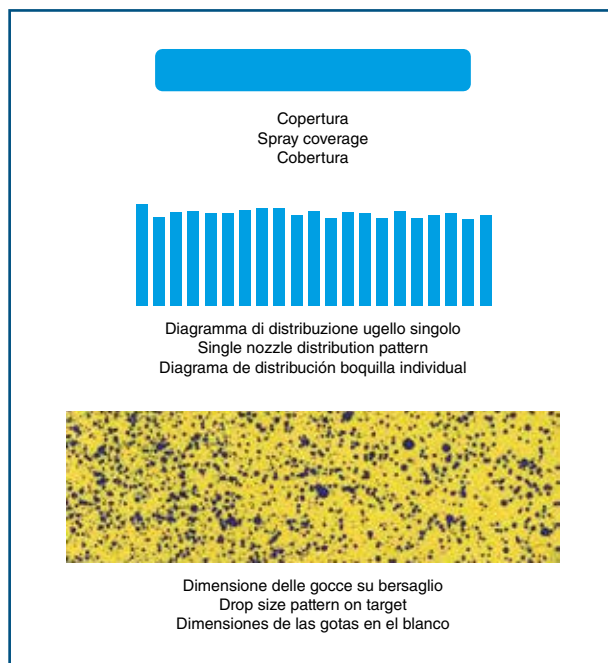
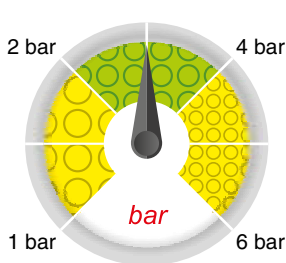
Dimensioni (mm)
Size (mm)
Dimensiones (mm)





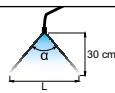



- Produce gocce grandi, utili per ridurre la deriva quando si lavora alla pressione nominale di 1 bar.
- Le misure più piccole dell'ugello sono particolarmente adatte per applicare diserbanti a basso volume, dove l'applicazione di ridotte quantità di prodotto si trasforma in un notevole risparmio di costi.
- Stampato in Delrin®, ad alta stabilità chimica, che conferisce ottime caratteristiche di durata.
- Adatto per l'utilizzo con pompa a spalla.

- They spray big drops offering benefits when working at the rated pressure of 1 bar as less prone to drift.
- The smaller sizes are especially suitable for spraying low volumes of herbicides, which also ensures a remarkable cost reduction.
- Made of molded Delrin®, a polymer ensuring high chemical stability and an exceptionally long useful life.
- Suitable for knapsack pump.

- Produce gotas grandes, útiles para reducir la deriva cuando se trabaja con una presión nominal de 1 bar.
- Las medidas más pequeñas de la boquilla son particularmente adecuadas para aplicar herbicidas en bajo volumen, donde la aplicación de reducidas de producto se transforma en notable ahorro de costos.
- Moldeado en Delrin®, material con alta estabilidad química, que otorga excepcionales características de duración.
- Adecuado para el uso con bomba de mochila.



| COD. CODE CÓD. |  |  |  |  | l/ha (spazio tra gli ugelli: 50 cm) l/ha (nozzle spacing: 50 cm) l/ha (espacio entre las boquillas: 50 cm) | | | | | | | |  Pompa a spalla Knapsack pump Pulverizador de mochila | |
|----------------------|---|---|---|---|--|--------|---------|---------|---------|---------|---------|---------|---|-------------------|
| | | | | | 6 km/h | 8 km/h | 10 km/h | 12 km/h | 14 km/h | 16 km/h | 18 km/h | 20 km/h | l/ha @ 60 m/min (3.6 km/h) L 115 cm / α 125° | L 130 cm / α 130° |
| DEF01 | --- | 1 | F | 0.23 | 46 | 35 | 28 | 23 | 20 | 17 | 15 | 14 | 33 | -- |
| | --- | 2 | F | 0.33 | 65 | 49 | 39 | 33 | 28 | 24 | 22 | 20 | 47 | -- |
| | 125° | 3 | F | 0.40 | 80 | 60 | 48 | 40 | 34 | 30 | 27 | 24 | 58 | -- |
| | --- | 4 | F | 0.46 | 92 | 69 | 55 | 46 | 40 | 35 | 31 | 28 | 67 | -- |
| --- | 6 | F | 0.57 | 113 | 85 | 68 | 57 | 48 | 42 | 38 | 34 | 82 | -- | |
| DEF015 | --- | 1 | M | 0.35 | 69 | 52 | 42 | 35 | 30 | 26 | 23 | 21 | 50 | -- |
| | --- | 2 | M | 0.49 | 98 | 73 | 59 | 49 | 42 | 37 | 33 | 29 | 71 | -- |
| | 125° | 3 | F | 0.60 | 120 | 90 | 72 | 60 | 51 | 45 | 40 | 36 | 87 | -- |
| | --- | 4 | F | 0.69 | 139 | 104 | 83 | 69 | 59 | 52 | 46 | 42 | 100 | -- |
| --- | 6 | F | 0.85 | 170 | 127 | 102 | 85 | 73 | 64 | 57 | 51 | 123 | -- | |
| DEF02 | --- | 1 | M | 0.46 | 92 | 69 | 55 | 46 | 40 | 35 | 31 | 28 | -- | 59 |
| | --- | 2 | F | 0.65 | 131 | 98 | 78 | 65 | 56 | 49 | 44 | 39 | -- | 84 |
| | 130° | 3 | F | 0.80 | 160 | 120 | 96 | 80 | 69 | 60 | 53 | 48 | -- | 103 |
| | --- | 4 | F | 0.92 | 185 | 139 | 111 | 92 | 79 | 69 | 62 | 55 | -- | 118 |
| --- | 6 | F | 1.13 | 226 | 170 | 136 | 113 | 97 | 85 | 75 | 68 | -- | 145 | |
| DEF025 | --- | 1 | M | 0.58 | 115 | 87 | 69 | 58 | 49 | 43 | 38 | 35 | -- | 74 |
| | --- | 2 | F | 0.82 | 163 | 122 | 98 | 82 | 70 | 61 | 54 | 49 | -- | 105 |
| | 130° | 3 | F | 1.00 | 200 | 150 | 120 | 100 | 86 | 75 | 67 | 60 | -- | 128 |
| | --- | 4 | F | 1.15 | 231 | 173 | 139 | 115 | 99 | 87 | 77 | 69 | -- | 148 |
| --- | 6 | F | 1.41 | 283 | 212 | 170 | 141 | 121 | 106 | 94 | 85 | -- | 181 | |
| DEF03 | --- | 1 | M | 0.69 | 139 | 104 | 83 | 69 | 59 | 52 | 46 | 42 | -- | 89 |
| | --- | 2 | F | 0.98 | 196 | 147 | 118 | 98 | 84 | 73 | 65 | 59 | -- | 126 |
| | 130° | 3 | F | 1.20 | 240 | 180 | 144 | 120 | 103 | 90 | 80 | 72 | -- | 154 |
| | --- | 4 | F | 1.39 | 277 | 208 | 166 | 139 | 119 | 104 | 92 | 83 | -- | 178 |
| --- | 6 | F | 1.70 | 339 | 255 | 204 | 170 | 145 | 127 | 113 | 102 | -- | 218 | |
| DEF04 | --- | 1 | M | 0.92 | 185 | 139 | 111 | 92 | 79 | 69 | 62 | 55 | -- | 118 |
| | --- | 2 | F | 1.31 | 261 | 196 | 157 | 131 | 112 | 98 | 87 | 78 | -- | 167 |
| | 130° | 3 | F | 1.60 | 320 | 240 | 192 | 160 | 137 | 120 | 107 | 96 | -- | 205 |
| | --- | 4 | F | 1.85 | 370 | 277 | 222 | 185 | 158 | 139 | 123 | 111 | -- | 237 |
| --- | 6 | F | 2.26 | 453 | 339 | 272 | 226 | 194 | 170 | 151 | 136 | -- | 290 | |
| DEF05 | --- | 1 | M | 1.15 | 231 | 173 | 139 | 115 | 99 | 87 | 77 | 69 | -- | 148 |
| | --- | 2 | M | 1.63 | 327 | 245 | 196 | 163 | 140 | 122 | 109 | 98 | -- | 209 |
| | 130° | 3 | F | 2.00 | 400 | 300 | 240 | 200 | 171 | 150 | 133 | 120 | -- | 256 |
| | --- | 4 | F | 2.31 | 462 | 346 | 277 | 231 | 198 | 173 | 154 | 139 | -- | 296 |
| --- | 6 | F | 2.83 | 566 | 424 | 339 | 283 | 242 | 212 | 189 | 170 | -- | 363 | |
| DEF06 | --- | 1 | M | 1.39 | 277 | 208 | 166 | 139 | 119 | 104 | 92 | 83 | -- | 178 |
| | --- | 2 | M | 1.96 | 392 | 294 | 235 | 196 | 168 | 147 | 131 | 118 | -- | 251 |
| | 130° | 3 | F | 2.40 | 480 | 360 | 288 | 240 | 206 | 180 | 160 | 144 | -- | 308 |
| | --- | 4 | F | 2.77 | 554 | 416 | 333 | 277 | 238 | 208 | 185 | 166 | -- | 355 |
| --- | 6 | F | 3.39 | 679 | 509 | 407 | 339 | 291 | 255 | 226 | 204 | -- | 435 | |
| DEF08 | --- | 1 | C | 1.85 | 370 | 277 | 222 | 185 | 158 | 139 | 123 | 111 | -- | 237 |
| | --- | 2 | C | 2.61 | 523 | 392 | 314 | 261 | 224 | 196 | 174 | 157 | -- | 335 |
| | 130° | 3 | M | 3.20 | 640 | 480 | 384 | 320 | 274 | 240 | 213 | 192 | -- | 410 |
| | --- | 4 | M | 3.70 | 739 | 554 | 443 | 370 | 317 | 277 | 246 | 222 | -- | 474 |
| --- | 6 | M | 4.53 | 905 | 679 | 543 | 453 | 388 | 339 | 302 | 272 | -- | 580 | |
| DEF10 | --- | 1 | C | 2.31 | 462 | 346 | 277 | 231 | 198 | 173 | 154 | 139 | -- | 296 |
| | --- | 2 | C | 3.27 | 653 | 490 | 392 | 327 | 280 | 245 | 218 | 196 | -- | 419 |
| | 130° | 3 | C | 4.00 | 800 | 600 | 480 | 400 | 343 | 300 | 267 | 240 | -- | 513 |
| | --- | 4 | C | 4.62 | 924 | 693 | 554 | 462 | 396 | 346 | 308 | 277 | -- | 592 |
| --- | 6 | C | 5.66 | 1131 | 849 | 679 | 566 | 485 | 424 | 377 | 339 | -- | 725 | |

|  | DIMENSIONE DELLE GOCCE DROP SIZE RATING DIMENSIONES DE LAS GOTAS | |
|---|--|---------------|
| F | Fine-Fine-Fina | 136µm ÷ 177µm |
| M | Media-Medium-Media | 177µm ÷ 218µm |
| C | Grossa-Coarse-Gruesa | 218µm ÷ 349µm |

millesimo di millimetro (Es.: 250µm = 0.25 mm)
µm = thousandth of a millimeter (E.g.: 250µm = 0.25 mm)
milésimo de milímetro (Ej.: 250µm = 0.25 mm)