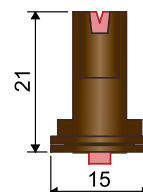




Utilizzo  
Use  
Utilización



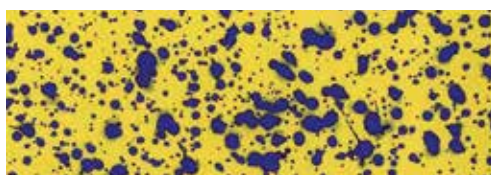
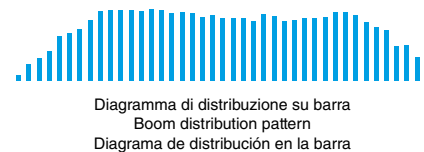
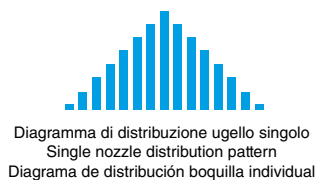
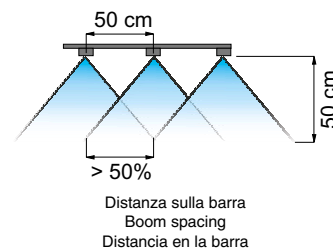
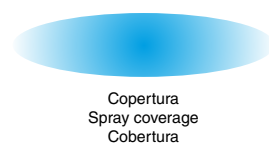
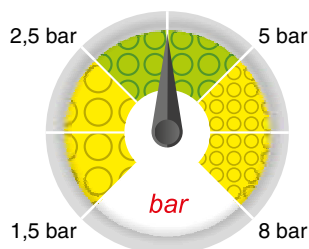
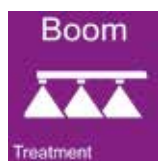
Dimensioni (mm)  
Size (mm)  
Dimensiones (mm)






- Copertura costante a tutte le pressioni.
- La struttura suddivisa in due pezzi consente una pulizia più facile.
- Le dimensioni standard permettono la sostituzione diretta degli ugelli di tipo Flat Fan.
- Riduzione della deriva fino ad un massimo del 90%, rispetto agli ugelli convenzionali.
- Sono in grado di produrre gocce di grandi dimensioni piene di bolle d'aria che si rompono a contatto con la coltura dividendosi in goccioline più fini.
- Il corpo esterno stampato in Delrin®, unito all'inserto in ceramica conferisce eccezionali caratteristiche di durata.
- Certificato ENAMA, ENTAM e ZNT.


- Smooth coverage at any pressure.
- Their two-piece structure allows easier cleaning
- Thanks to their standard size they can directly replace Flat Fan nozzles.
- Drift reduced up to 90% if compared to classic nozzles.
- Spray very big drops containing air bubbles, which break onto the crop into several smaller drops.
- Their Delrin®-molded outer body, together with their ceramic insert, ensures an exceptionally long useful life.
- ENAMA, ENTAM and ZNT certified.

- Cobertura constante en todas las presiones.
- La estructura subdividida en dos piezas permite una limpieza más fácil.
- Las dimensiones estándar permiten la sustitución directa de las boquillas de tipo Flat Fan.
- Reducción de la deriva hasta un máximo del 90% respecto a las boquillas convencionales.
- Pueden emitir gotas de grandes dimensiones llenas de burbujas de aire que se rompen al entrar en contacto con el cultivo, dividiéndose en pequeñas y más finas gotas.
- El cuerpo exterior moldeado en Delrin®, junto al inserto de cerámica, le otorga excepcionales características de durabilidad.
- Certificado ENAMA, ENTAM y ZNT.



Dimensione delle gocce su bersaglio  
Drop size pattern on target  
Dimensiones de las gotas en el blanco

COD. CODE CÓD.				l/ha (spazio tra gli ugelli: 50 cm) l/ha (nozzle spacing: 50 cm) l/ha (espacio entre las boquillas: 50 cm)									
				4 km/h	6 km/h	8 km/h	10 km/h	12 km/h	14 km/h	16 km/h	18 km/h	20 km/h	25 km/h
AFC11001	1.5	<b>XC</b>	0.28	85	57	42	34	28	24	21	19	17	14
	3	<b>XC</b>	0.40	120	80	60	48	40	34	30	27	24	19
	4	<b>C</b>	0.46	139	92	69	55	46	40	35	31	28	22
	6	<b>C</b>	0.57	170	113	85	68	57	48	42	38	34	27
AFC110015	1.5	<b>XC</b>	0.42	127	85	64	51	42	36	32	28	25	20
	3	<b>VC</b>	0.60	180	120	90	72	60	51	45	40	36	29
	4	<b>C</b>	0.69	208	139	104	83	69	59	52	46	42	33
	6	<b>C</b>	0.85	255	170	127	102	85	73	64	57	51	41
AFC11002	1.5	<b>UC</b>	0.57	170	113	85	68	57	48	42	38	34	27
	3	<b>XC</b>	0.80	240	160	120	96	80	69	60	53	48	38
	4	<b>VC</b>	0.92	277	185	139	111	92	79	69	62	55	44
	6	<b>C</b>	1.13	339	226	170	136	113	97	85	75	68	54
AFC110025	1.5	<b>XC</b>	0.71	212	141	106	85	71	61	53	47	42	34
	3	<b>VC</b>	1.00	300	200	150	120	100	86	75	67	60	48
	4	<b>C</b>	1.15	346	231	173	139	115	99	87	77	69	55
	6	<b>C</b>	1.41	424	283	212	170	141	121	106	94	85	68
AFC11003	1.5	<b>XC</b>	0.85	255	170	127	102	85	73	64	57	51	41
	3	<b>VC</b>	1.20	360	240	180	144	120	103	90	80	72	58
	4	<b>VC</b>	1.39	416	277	208	166	139	119	104	92	83	67
	6	<b>C</b>	1.70	509	339	255	204	170	145	127	113	102	81
AFC11004	1.5	<b>XC</b>	1.13	339	226	170	136	113	97	85	75	68	54
	3	<b>XC</b>	1.60	480	320	240	192	160	137	120	107	96	77
	4	<b>VC</b>	1.85	554	370	277	222	185	158	139	123	111	89
	6	<b>C</b>	2.26	679	453	339	272	226	194	170	151	136	109
AFC11005	1.5	<b>UC</b>	1.41	424	283	212	170	141	121	106	94	85	68
	3	<b>XC</b>	2.00	600	400	300	240	200	171	150	133	120	96
	4	<b>VC</b>	2.31	693	462	346	277	231	198	173	154	139	111
	6	<b>VC</b>	2.83	849	566	424	339	283	242	212	189	170	136
AFC11006	1.5	<b>UC</b>	1.70	509	339	255	204	170	145	127	113	102	81
	3	<b>XC</b>	2.40	720	480	360	288	240	206	180	160	144	115
	4	<b>XC</b>	2.77	831	554	416	333	277	238	208	185	166	133
	6	<b>VC</b>	3.39	1.018	679	509	407	339	291	255	226	204	163
8	<b>C</b>	3.92	1.176	784	588	470	392	336	294	261	235	188	

	DIMENSIONE DELLE GOCCE DROP SIZE RATING DIMENSIONES DE LAS GOTAS	
<b>C</b>	Grossa-Coarse-Gruesa	218µm ÷ 349µm
<b>VC</b>	Molto grossa-Very coarse-Muy gruesa	349µm ÷ 428µm
<b>XC</b>	Estremamente grossa-Extremely coarse-Extremadamente gruesa	428µm ÷ 622µm
<b>UC</b>	Ultra grossa-Ultra coarse-Ultra gruesa	> 622µm

millesimo di millimetro (Es.: 250µm = 0.25 mm)  
µm = thousandth of a millimeter (E.g.: 250µm = 0.25 mm)  
milésimo de milímetro (Ej.: 250µm = 0.25 mm)

